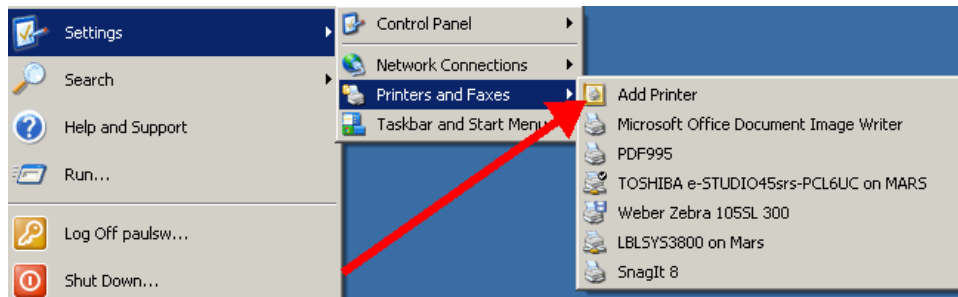


How to download a Legitronic Labeling Software label format to a Zebra printer for automatic printing



1. Log into Windows using an account with administrative privileges.
2. Open the Printers area of Windows. (Figure 1)

Figure 1

3. Right-click on the printer you want to download the format to.
4. Choose Properties from the quick-pick menu. (Figure 2)

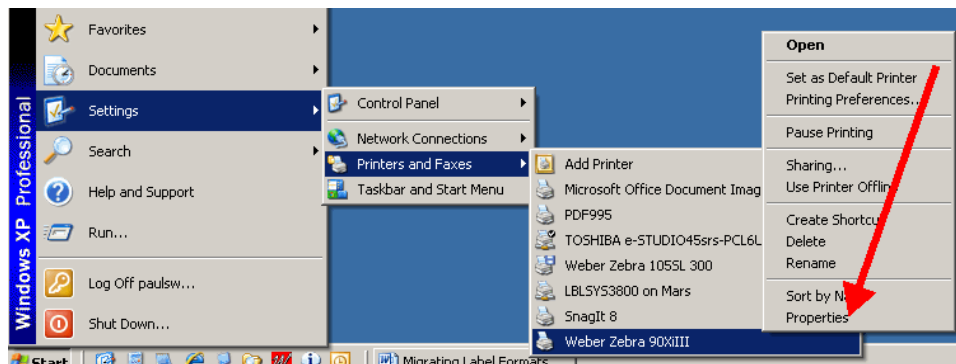


Figure 2

5. Click on the Ports tab.(Figure 3)

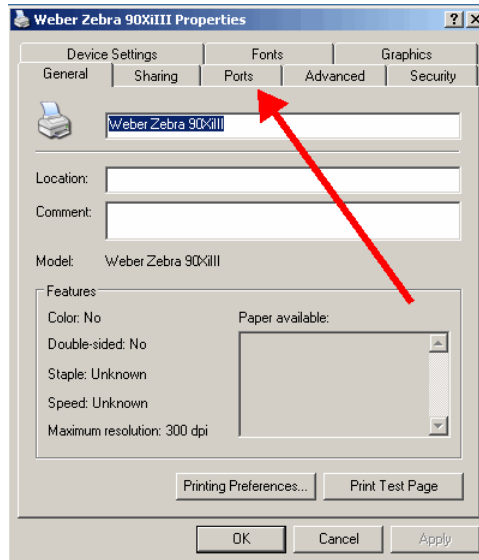


Figure 3

6. Change the Port assignment from whatever it currently is, (Figure 4a) to File. (Figure 4b)

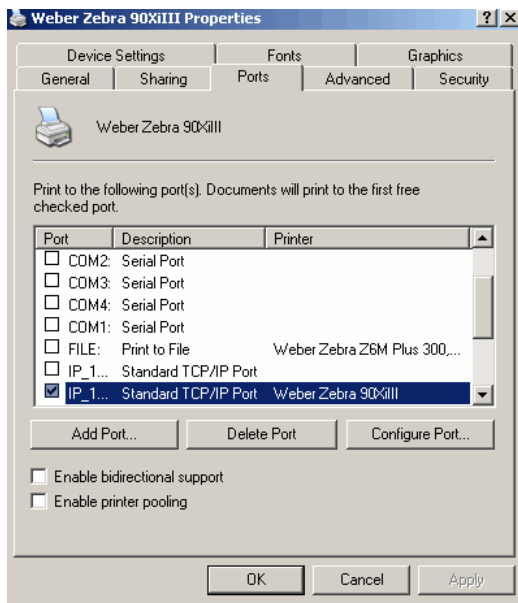


Figure 4a

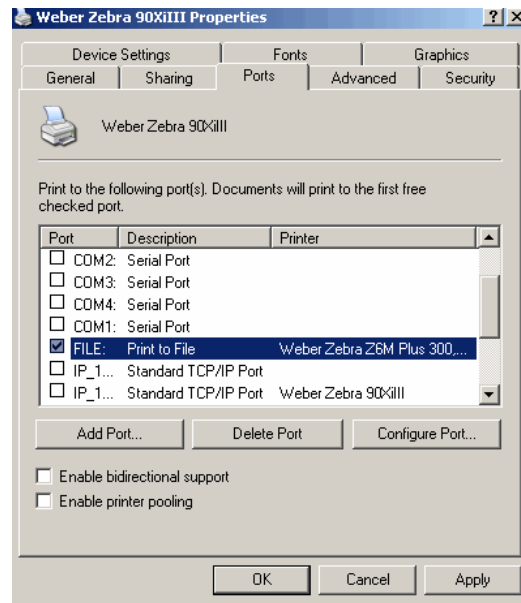


Figure 4b

7. Click OK to close the printer properties.

8. Create and save your label as you normally would with Legitronic Labeling Software.

9. Open the label for printing. You will be presented with the Job Settings Dialog Box. (Figure 5)

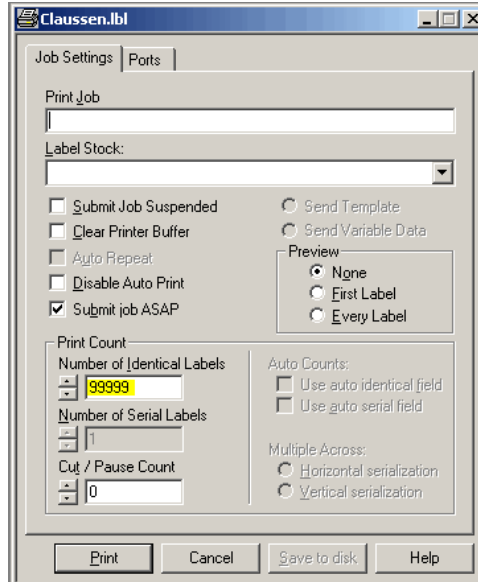


Figure 5

10. Enter the number 99999 at the Number of Identical Labels, as highlighted in Figure 5.

11. Click Print. You will be presented with the print to File Dialog Box. (Figure 6)

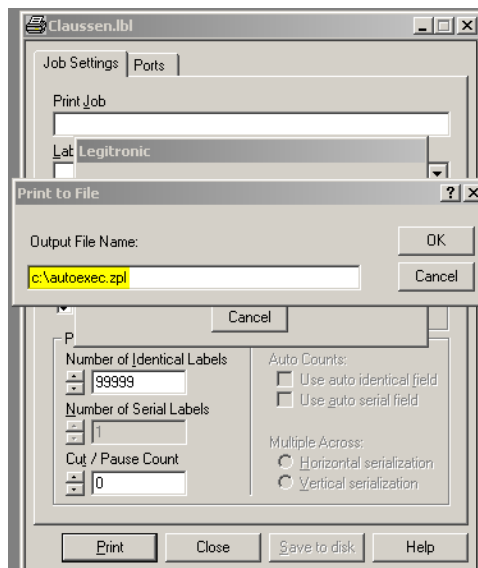


Figure 6

12. Key in c:\autoexec.zpl exactly as highlighted in Figure 6.

13. Click OK

14. Copy the autoexec.zpl file you created in steps 8 – 13 from the root directory of your computer's C drive (c:\) to a location where you will not forget.

15. **MAKE A BACKUP COPY OF THE FILE IN CASE YOU MAKE A MISTAKE WHILE EDITING.**

16. Open the file in a text editor like Notepad. (Figure 7)

NOTE: Do not use a word processor like Wordpad or MS Word unless you know how to save the file without any formatting.

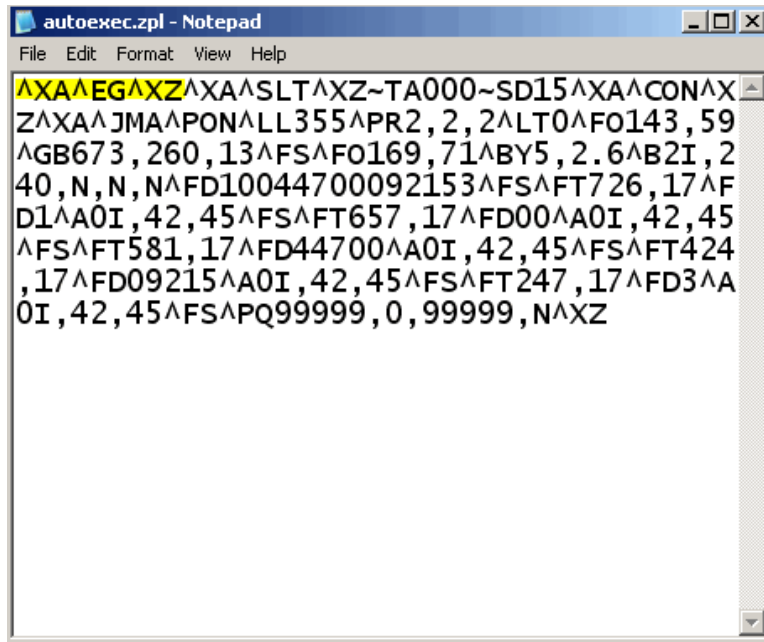


Figure 7

17. Delete the first nine characters, ^XA^EG^XZ, exactly as highlighted in Figure 7.

18. Insert the string, ^DFE:AUTOEXEC.ZPL, exactly as highlighted in Figure 8.

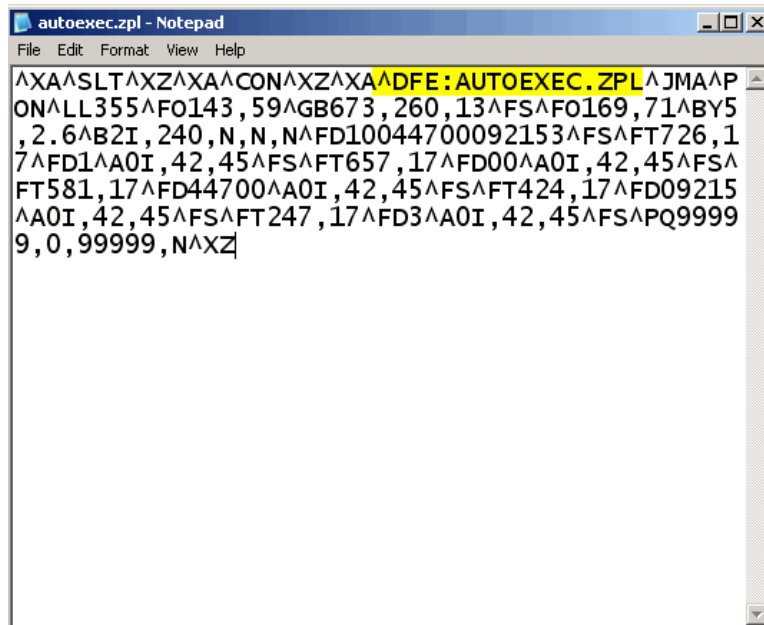


Figure 8

19. Save the file.
20. Close the editor.
21. Initialize the Flash Memory of the printer or print engine, as instructed in the Product User Guide.
22. Cycle the power on the printer or print engine.
23. Copy the autoexec.zpl file to the com port that the printer is connected to.

Here is an example using a Windows XP command line interface and the PC's printer port:

- a) Go to the Windows Start Menu and select Run.
- b) Type in cmd. A DOS-like window will open.
- c) Navigate, using DOS command line syntax, to the location of the file you want to load into the printer, I.E. CD E:\
- d) Copy the file, using DOS command line syntax, to the com port that the printer is connected to, I.E. COPY AUTOEXEC.ZPL LPT1.

Allow some time for the format to fully transmit to the printer, and then cycle the power on the printer or print engine. When the printer is ready it should start printing, or in the case of a print engine, cycle through the application process. The display window on the device should read Printing X of 99999 (X=whatever the current label count is).