



ODBC (Open Database Connectivity)

Open Database Connectivity (*ODBC*) is a standard or open application-programming interface (*API*) for accessing a database. By using ODBC statements in a program, you can access files in a number of different databases, including Access, SQL and Oracle. In addition to the Database software, a separate module or driver is needed. The main proponent and supplier of ODBC programming support is Microsoft.

This document covers the setup of the ODBC driver and label design. Microsoft Access running under Windows XP Professional is used as an example in this document. The configuration of the ODBC Driver will not change when using other databases. Setting up the label design will remain the same except where the instructions refer to Access.

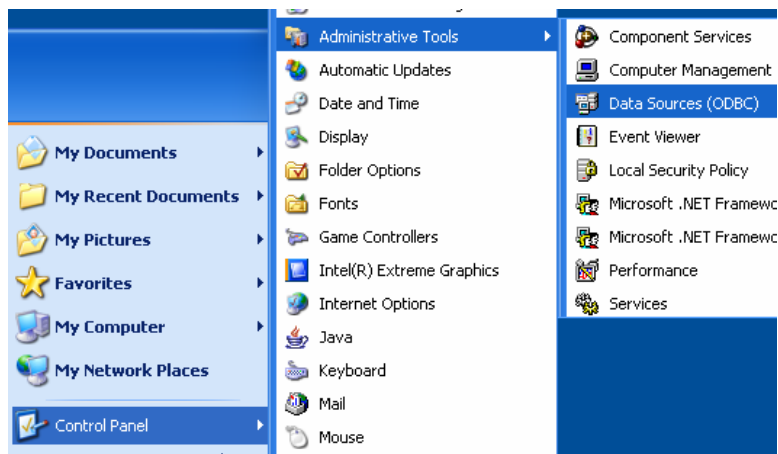
Requirements:

Make sure you have Microsoft Access 7.0 or Higher (95 & 97) installed.

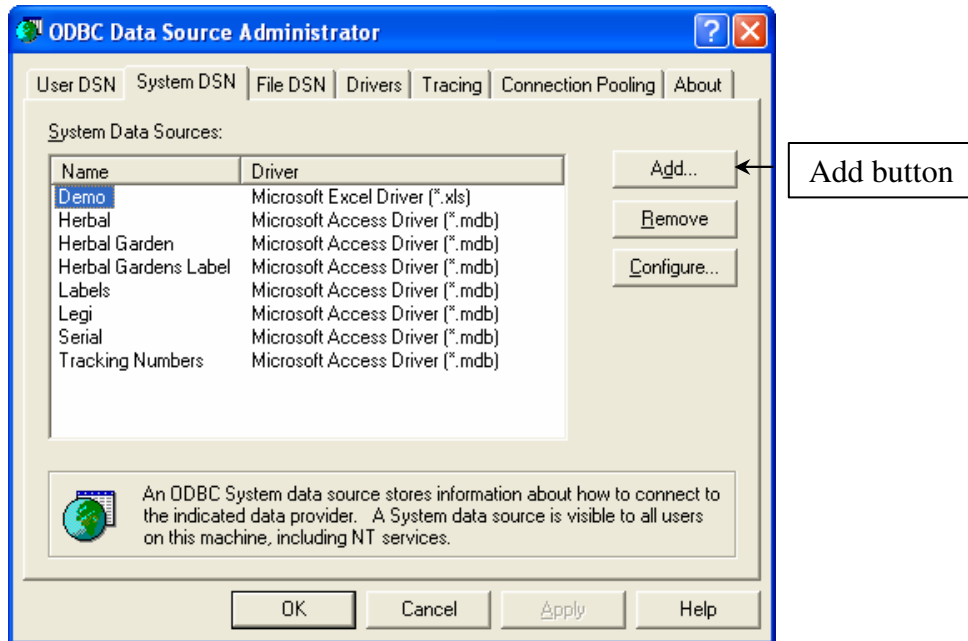
Make sure you have Legitronic version 3.0.0 through 3.5.1 installed.

PART I Configuring the ODBC driver and defining a Data Source

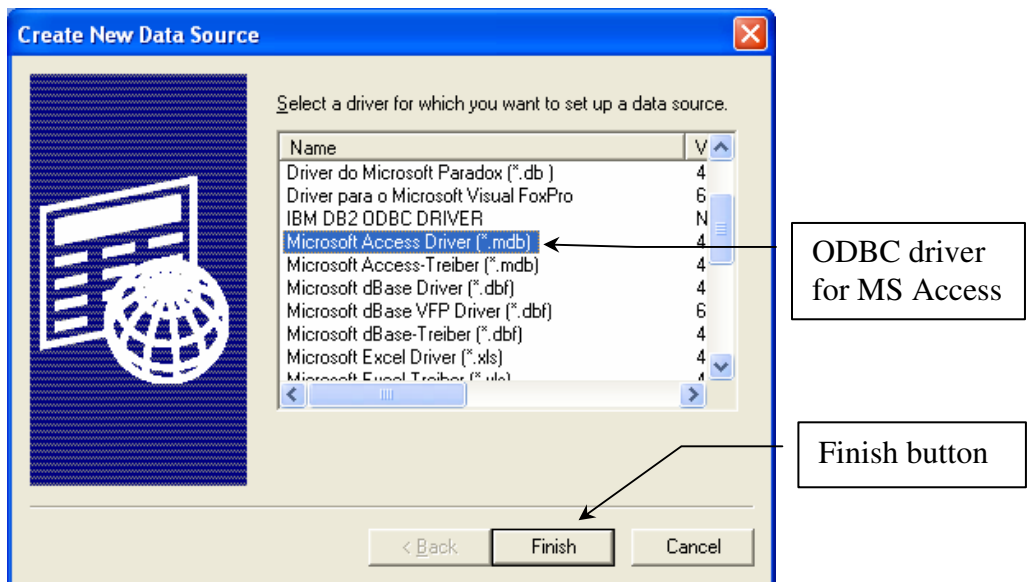
- 1.) Click on Start then on Control Panel then on Administrative Tools then on Data Sources (ODBC).



2.) Select the System DSN tab and click [Add]

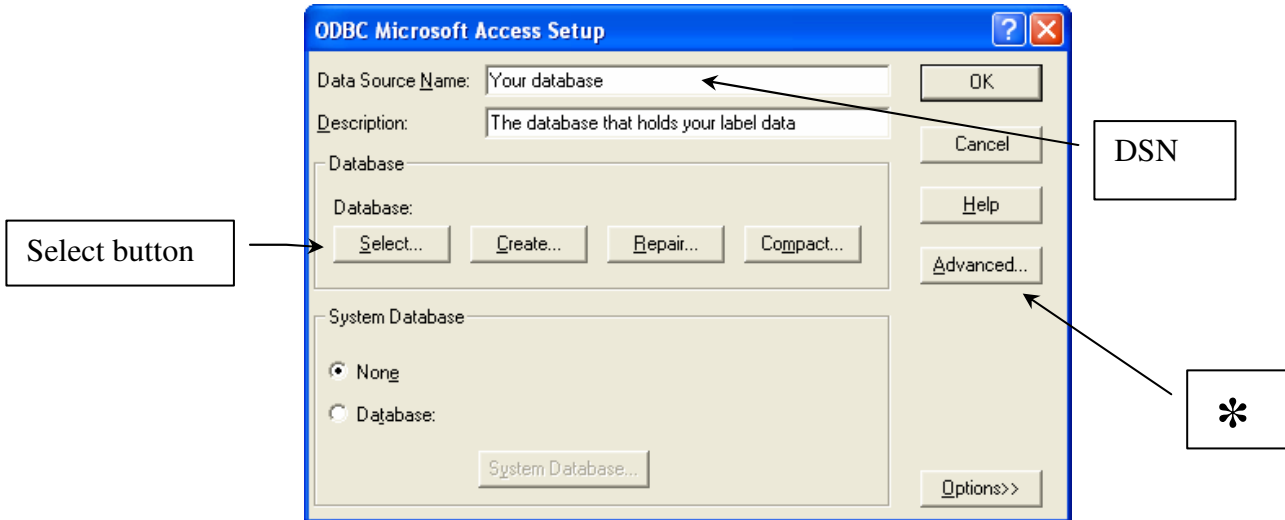


3.) The next step is creating a Data Source. The Data Source is the key name that you enter to connect to your database to the Label format. Select the type of database you are using and click finish. For this example, we will use Microsoft Access. Select Microsoft Access Driver and click [Finish].



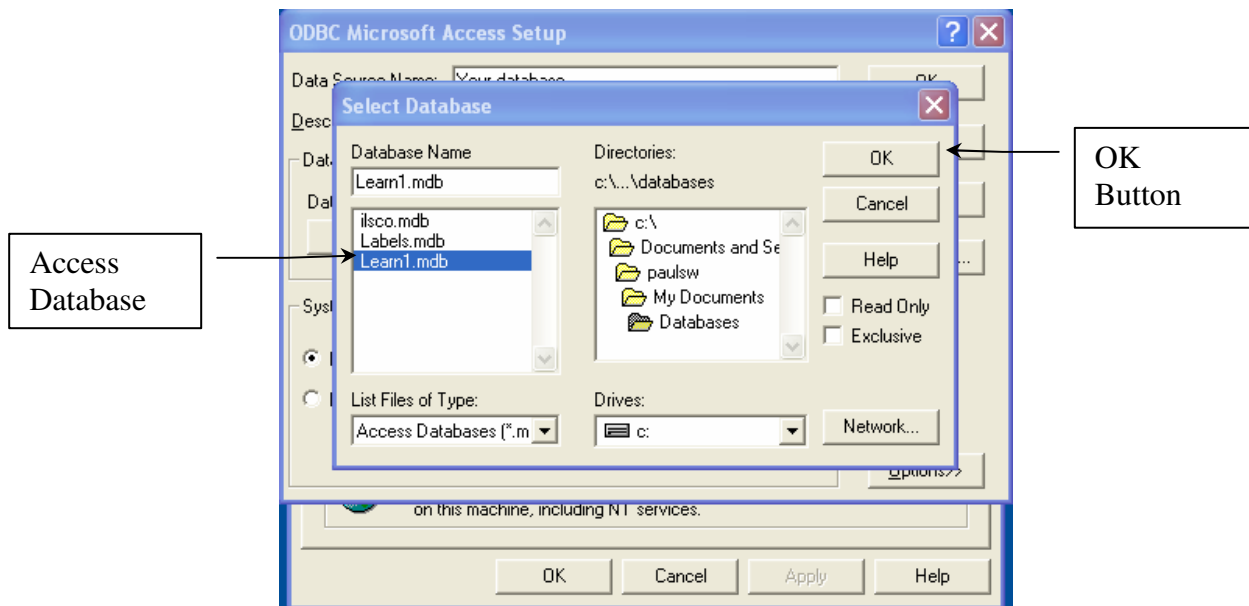
- 4.) The next step is to enter a Data Source Name (*DSN*). The DSN will be the name that will be used in the Legitronic 3.X.X ODBC database field that will reference the label format to the assigned database. The DSN is assigned by the operator and can be any combination of alpha and numeric characters.

Note: The description field is optional and only to be used as a reference.

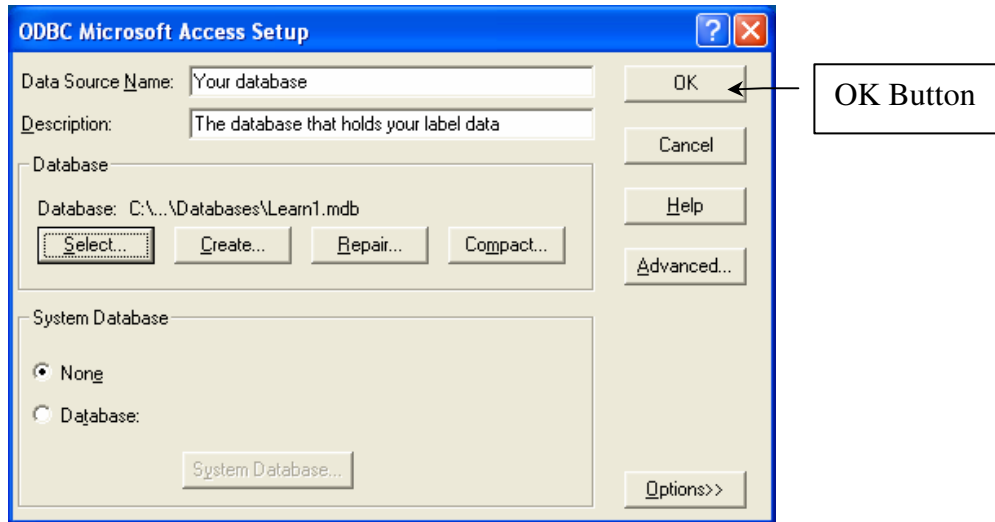


* Clicking the [Advanced] button allows the Data Source Name to be password protected. This will not be addressed in this paper. For further information, call Labeling Systems.

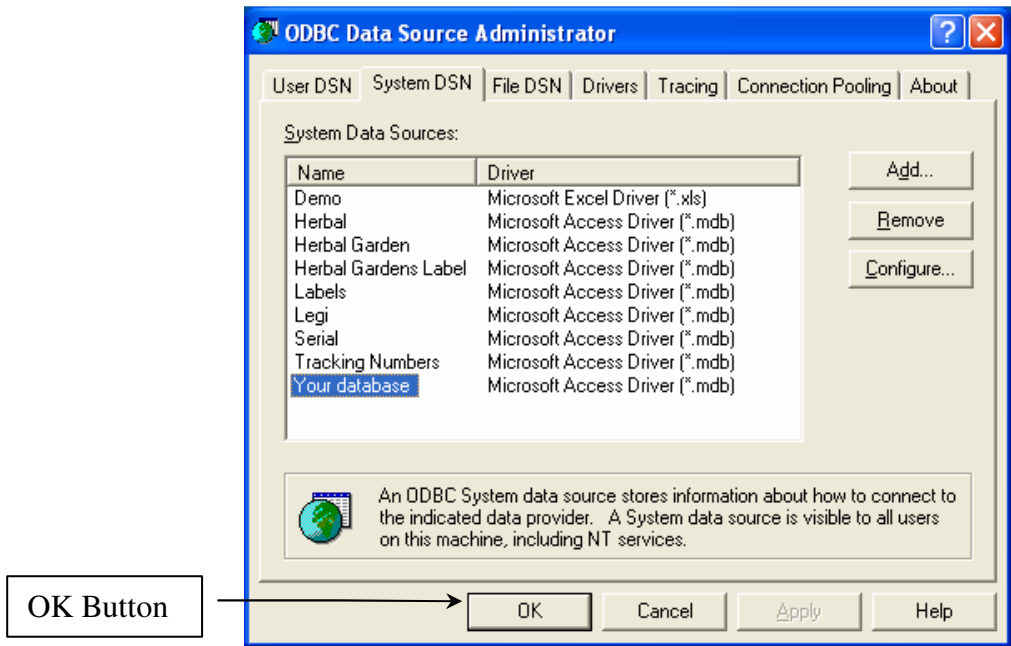
- 5.) Click the [Select] button on the ODBC Microsoft Access Set Up screen. The following screen will appear. Select the Access Database to be used for the Label. Then click [OK].



6.) Note the file path will show under database. Click [OK].

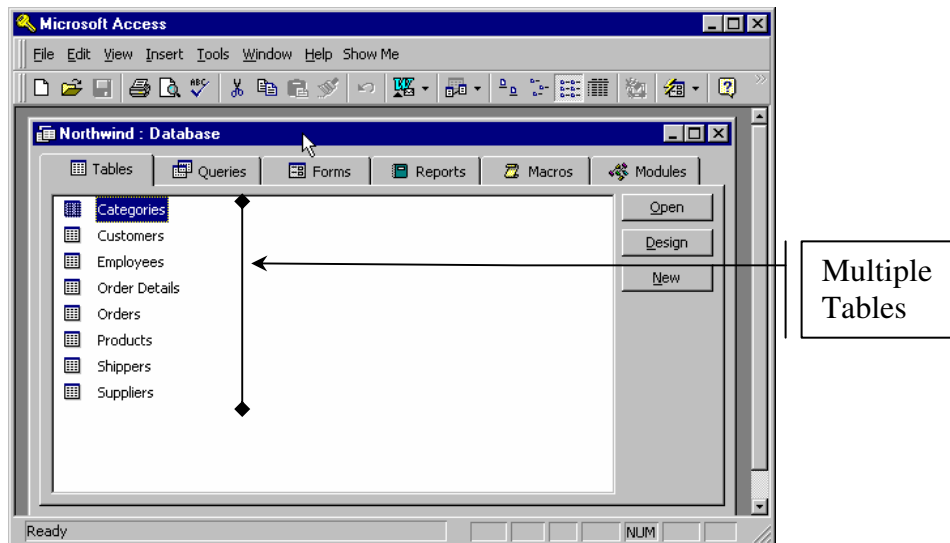


7.) You should now be back at the ODBC Data Source Administrator screen. Click [OK] and you are finished configuring the ODBC Data Source.



PART II Setting up Label Design

A database may contain multiple tables. You will need to know which table within the database you will use along with the column headings. The format can use data from multiple tables using one Data Source Name. A recommendation would be to print the first page of the table so you have the column names and data in the table. Following are examples of an Access database with multiple tables and an example of an Access table.



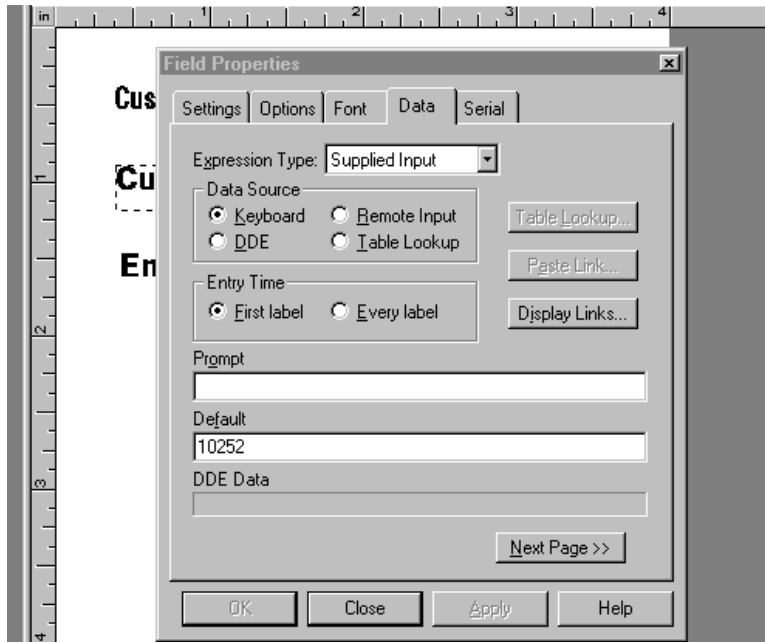
Example of Access Database with multiple tables

The screenshot shows the 'Orders' table in the Northwind database. The table has the following columns: Order ID, Customer, Employee, Order Date, Required Date, and Shipped Date. The data is as follows:

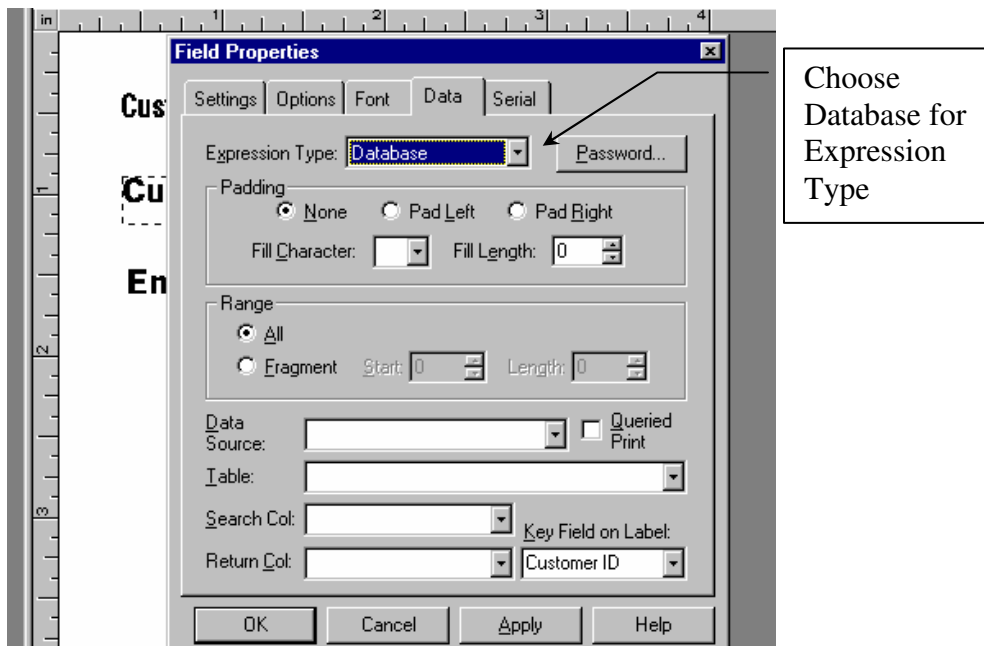
Order ID	Customer	Employee	Order Date	Required Date	Shipped Date
10248	Vins et alcools Chevalier	Buchanan, Steven	04-Aug-94	01-Sep-94	16-Aug-94
10249	Toms Spezialitäten	Suyama, Michael	05-Aug-94	16-Sep-94	10-Aug-94
10250	Hanari Carnes	Peacock, Margaret	08-Aug-94	05-Sep-94	12-Aug-94
10251	Victuailles en stock	Leverling, Janet	08-Aug-94	05-Sep-94	15-Aug-94
10252	Suprêmes délices	Peacock, Margaret	09-Aug-94	06-Sep-94	11-Aug-94
10253	Hanari Carnes	Leverling, Janet	10-Aug-94	24-Aug-94	16-Aug-94
10254	Chop-suey Chinese	Buchanan, Steven	11-Aug-94	08-Sep-94	23-Aug-94
10255	Richter Supermarkt	Dodsworth, Anne	12-Aug-94	09-Sep-94	15-Aug-94
10256	Wellington Importadora	Leverling, Janet	15-Aug-94	12-Sep-94	17-Aug-94
10257	HILARION-Abastos	Peacock, Margaret	16-Aug-94	13-Sep-94	22-Aug-94
10258	Ernst Handel	Davolio, Nancy	17-Aug-94	14-Sep-94	23-Aug-94
10259	Centro comercial Moctezuma	Peacock, Margaret	18-Aug-94	15-Sep-94	25-Aug-94
10260	Otilies Käseladen	Peacock, Margaret	19-Aug-94	16-Sep-94	29-Aug-94
10261	Que Delicia	Peacock, Margaret	19-Aug-94	16-Sep-94	30-Aug-94
10262	Rattlesnake Canyon Grocery	Callahan, Laura	22-Aug-94	19-Sep-94	25-Aug-94
10263	Ernst Handel	Dodsworth, Anne	23-Aug-94	20-Sep-94	31-Aug-94
10264	Folk och få HB	Suyama, Michael	24-Aug-94	21-Sep-94	23-Sep-94
10265	Blondel père et fils	Fuller, Andrew	25-Aug-94	22-Sep-94	12-Sep-94
10266	Wartian Herku	Leverling, Janet	26-Aug-94	07-Oct-94	31-Aug-94
10267	Frankenversand	Peacock, Margaret	29-Aug-94	26-Sep-94	06-Sep-94
10268	GROSELLA-Restaurante	Callahan, Laura	30-Aug-94	27-Sep-94	02-Sep-94
10269	White Clover Markets	Buchanan, Steven	31-Aug-94	14-Sep-94	09-Sep-94

Example of the Orders Table within the Access database

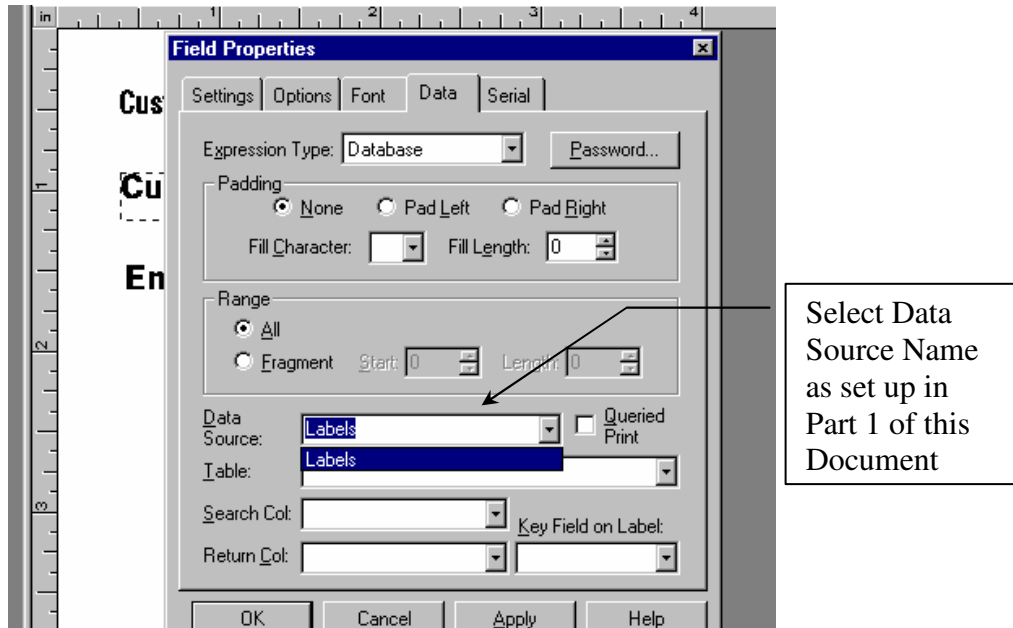
- 1.) The first step is to set up a key field for the label. In Legitronic, the key field on the label usually is an operator-supplied field. This field will typically supply a unique piece of information.



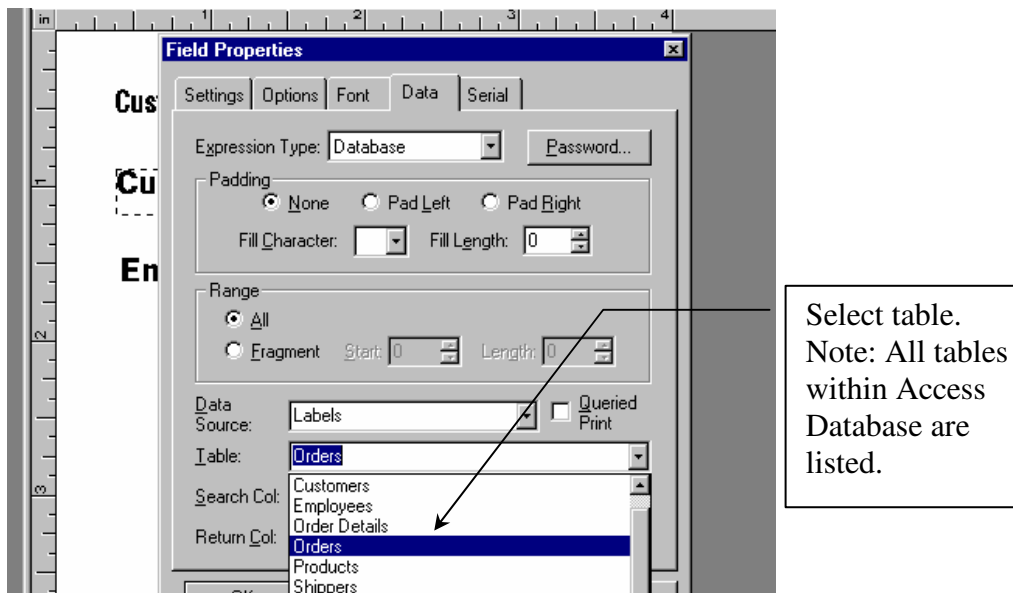
- 2.) The next field to be created will be the Database field. Create a text field on the label and right mouse click on the field and choose "Data". Then select Database as the Expression Type.



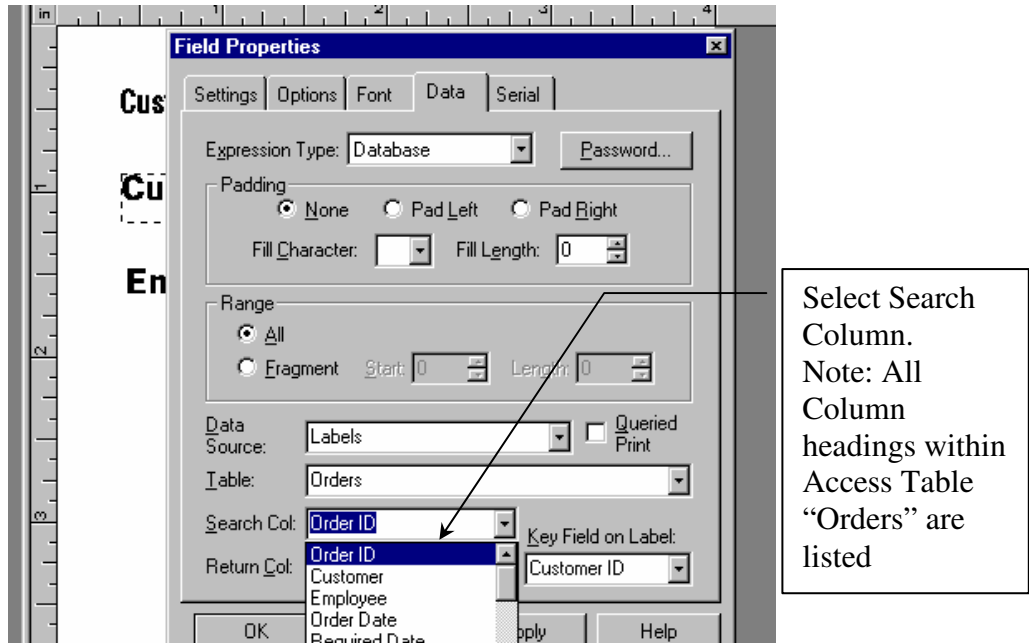
3.) Select the Data Source Name.



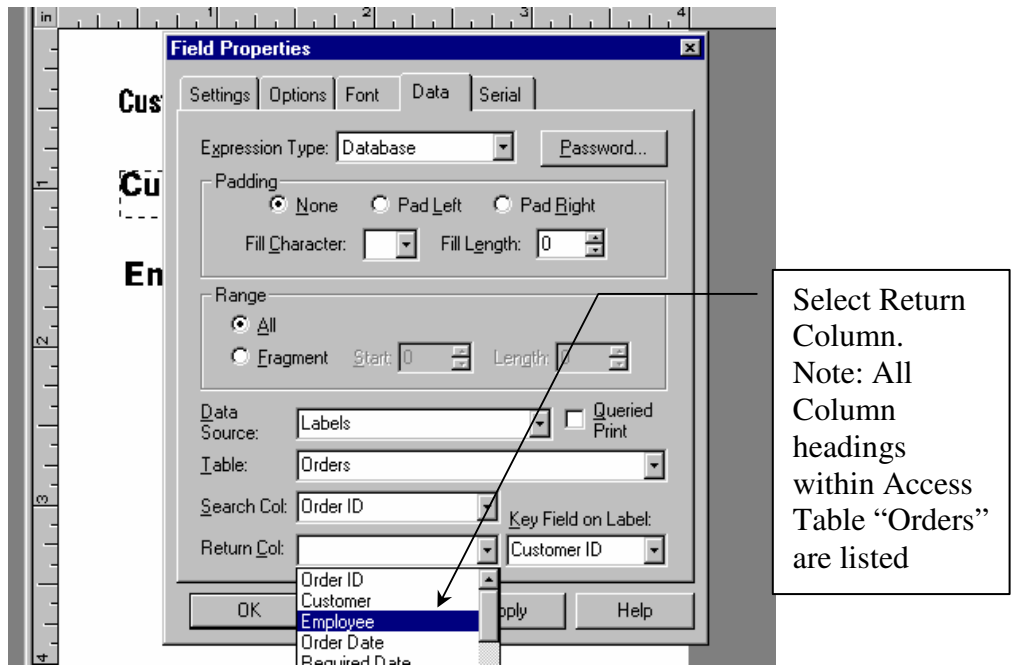
4.) Select Table



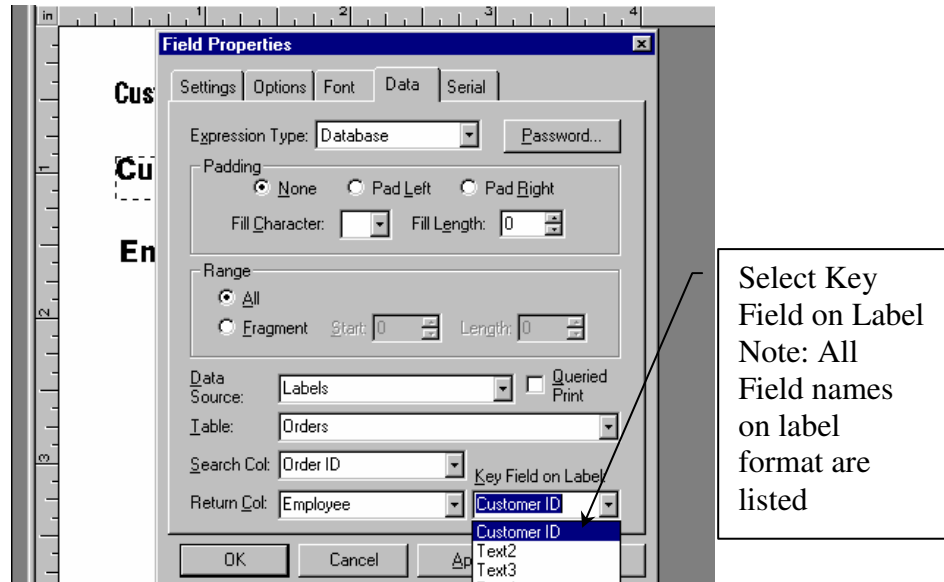
5.) Select Search Column



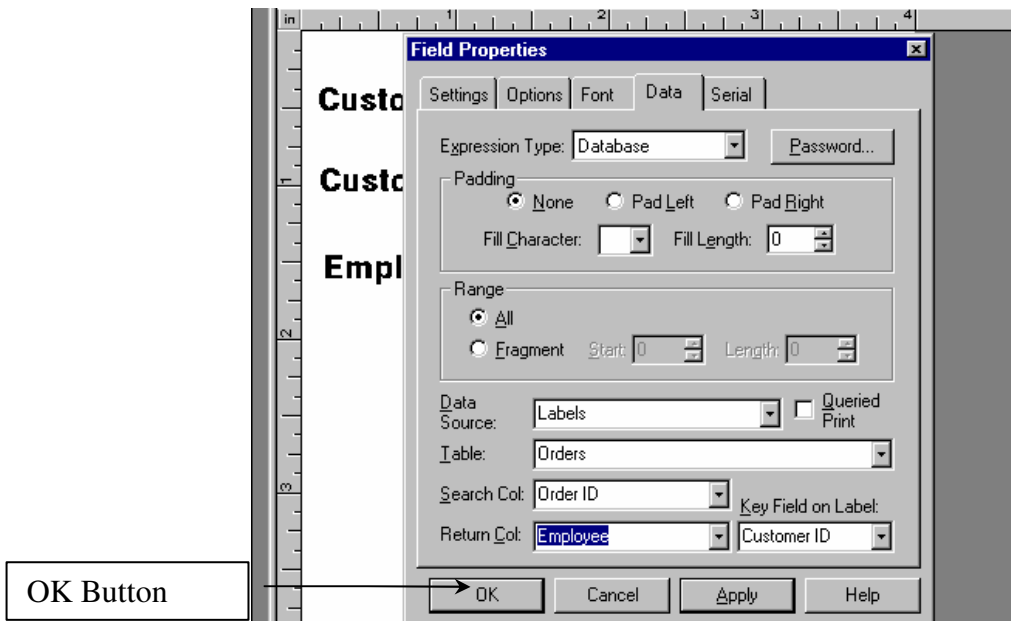
6.) Select Return Column



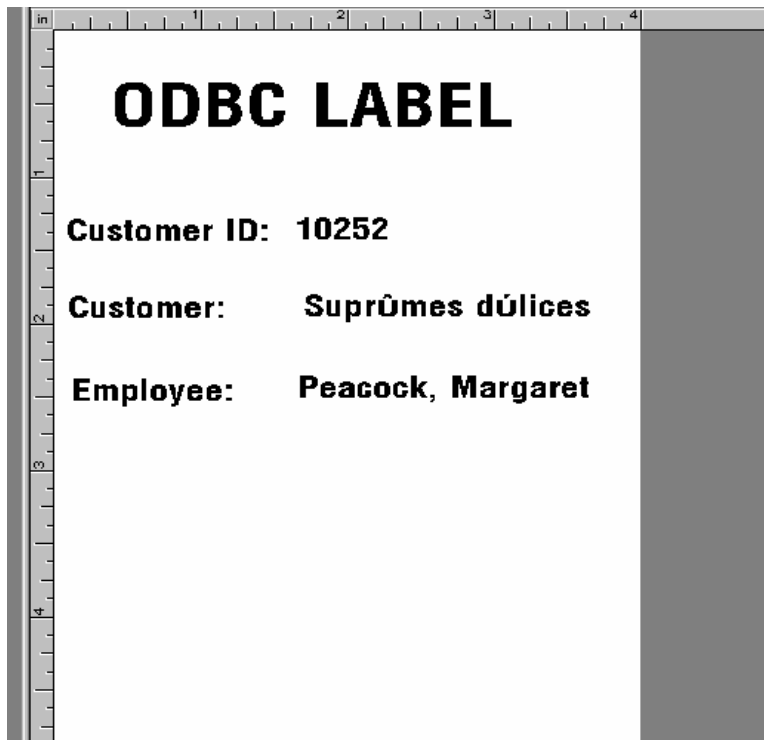
7.) Select Key Field on Label.



8.) Click [OK]



9.) You are finished setting up the ODBC field within Legitronic Labeling Software.



If you have any questions on this process, please contact Labeling Systems at 847.364.8500 ext 773.