

# Cost-Efficient Tronics Series 3 Open-Frame Label Applicator



## Open-Frame Label Applicator

When it comes to cost-efficiency coupled with labeling speed and accurate label placement, the Tronics 3 Series Open-Frame system from Weber is a versatile solution to a range of pressure-sensitive labeling applications.

The Open-Frame system applies front, back, bottom and wrap-around labels to a wide variety of flat-sided, straight-walled products and packages. And this easy-to-adapt unit can be ordered in standard-, medium- and high-speed configurations.

Featuring rugged construction that provides operational dependability, the Series 3 Open-Frame system dispenses and applies pressure-sensitive labels from 0.5 inches wide and long to a full nine inches wide and up to 39 inches in length.

## Products & Packages

The Series 3 Open-Frame system consists of a standard 7.5-inch wide (12 inches optional), 10-foot long, heavy-duty conveyor and labeling head(s) that will apply labels with a web up to nine inches wide (kits for larger labels are optional).



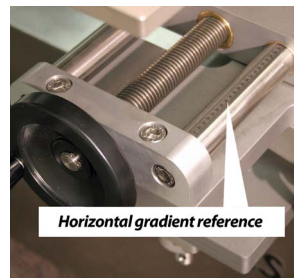
- **Sizes** – From vials as small as 5ml to 10-gallon pails
- **Shapes** – Flat-sided packages/products (multiple sides, if required), straight-walled cylinders/tubes, oddly-shaped packages, more
- **Materials** – Ideal for applying labels to plastics, paper products, metals, glass, rubber, ceramic, wood, more

## Labels

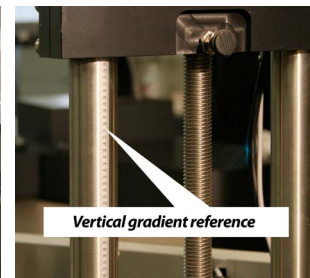
The Series 3 Open-Frame system has the flexibility to apply both large and small labels in a variety of shapes, and place them virtually anywhere on a product or package.

- **Sizes** – From .5-inch wide by .5-long, and up to nine inches wide by 39 inches long (up to 12 inches wide optional)
- **Application** – Versatile enough to apply to the front, back, bottom, wrap-around (up to 100 percent), crescent-shaped, corner-wrap, spot, tamper-evident, booklet, more
- **Materials** – Standard pressure-sensitive paper, films, clear, foil, more

## Product & Label Changeovers



Horizontal gradient reference



Vertical gradient reference

One of the distinct operational advantages of the Series 3 Open-Frame is its easy adjustability when changing products and/or labels.

Its conveyor rails – plus modules like labeling heads, wrap-around belt, and backing pad – all feature adjustments that require no tools and include quick-reference measurements that are beveled into the their shafts.

## Touch Panel Operation

The Series 3 Open-Frame system features simple electronics and touch-pad controls that provide several distinct operational advantages.

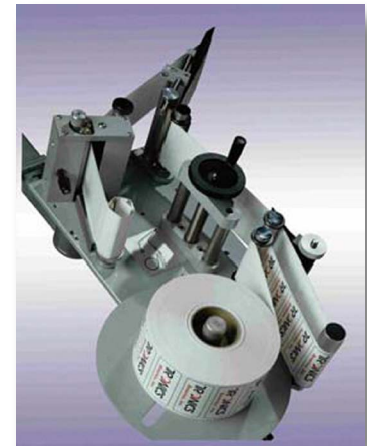
- Job memory – To expedite changeovers, up to 100 separate jobs can be stored in the system's memory
- On-the-fly adjustment – The touch pad provides many adjustment options without stopping the system
- Software – The unit's on-board software communicates with an array of PLC's, including Allen-Bradley and Omron; software for any possible upgrade is pre-loaded – no downloading required
- Durability – Its sealed interface provides protection in chemical and other industrial environments

Tronics Series 3 Open-Frame systems from Weber also include an array of additional features, including batch counting, real-time products/minute display, total products labeled, additional inputs/outputs for missing/low label and for integration with PLC's on attendant packaging and handling equipment.

In addition, all Open-Frame modules contain individual stepper motors that are fully synchronized with the unit's conveyor stepper motor. That means consistently accurate label placement, regardless of changing production speeds.



Touch-pad controls



Synchronized Stepper Motors

## Series 3 Open-Frame Label Applicator Specifications

### Electrical

110 volts, single-phase, 20 amps (220 volts, single-phase available)

### Air

None required (except for special options)

### Weight

Approximately 1,200 lbs.

### Accuracy

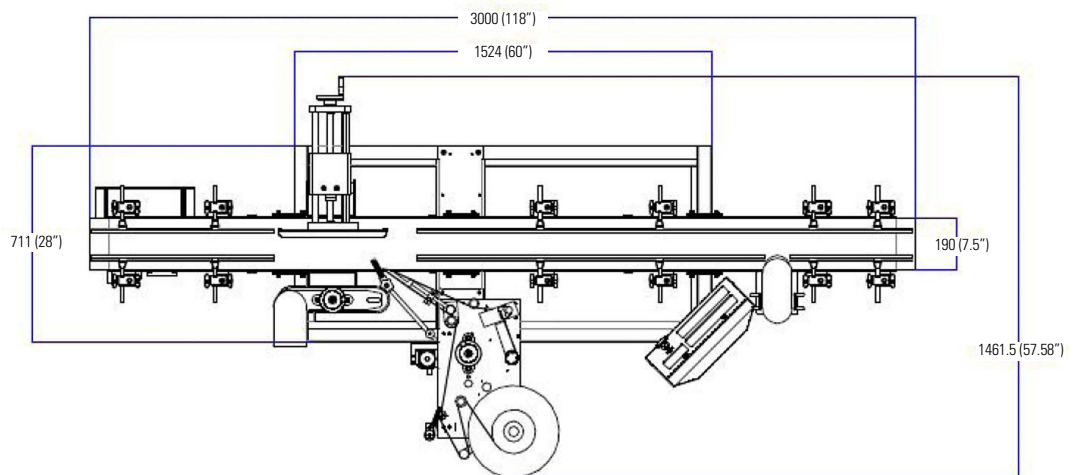
±0.03" (subject to sample evaluation)

### Label Size

- Min .5" x .5"
- Max 9" wide x 39" long (upgrade kit to accommodate 12.5" web)

### Speed

1,200" of label per minute standard (1,600" and 2,400" upgrades available)



**Weber**  
Labels & Labeling Systems

Weber Packaging Solutions, Inc.

711 West Algonquin Rd. • Arlington Heights, IL 60005-4457 • 847.364.8500 • FAX 847.364.8575

[www.weberpackaging.com](http://www.weberpackaging.com)

**TRONICS**<sup>™</sup>