

Changing the Default Label Size on a Legitronic Labeling Software Printer

1. Log into Windows using an account with administrative privileges.
2. Open the Printers area of Windows. (Figure 1)

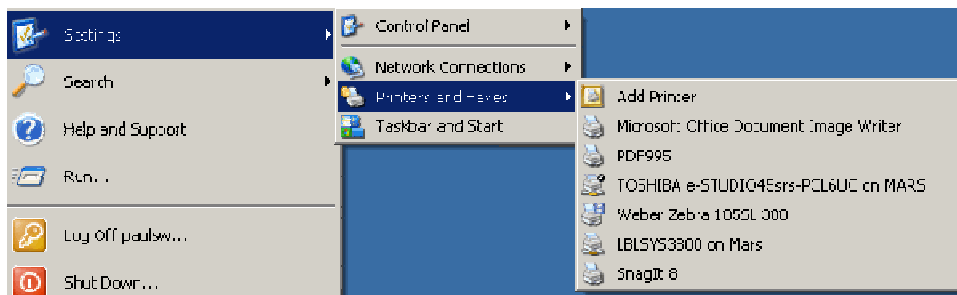


Figure 1

3. Right-click on the printer.
4. Choose Properties from the quick-pick menu. (Figure 2)

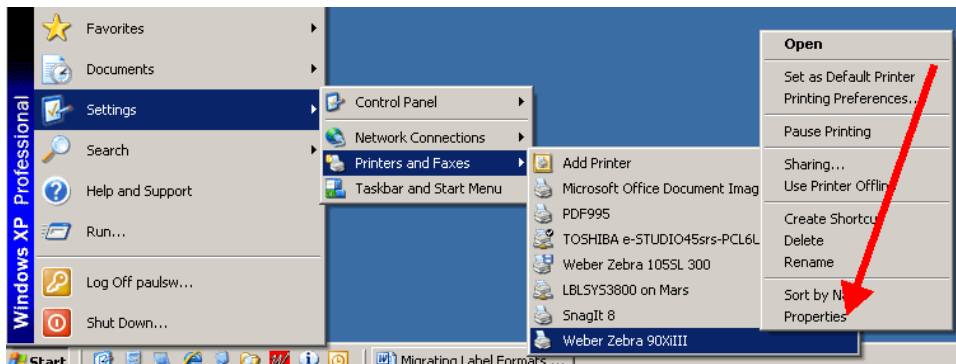


Figure 2

5. Click on the Device Settings tab. (Figure 3)

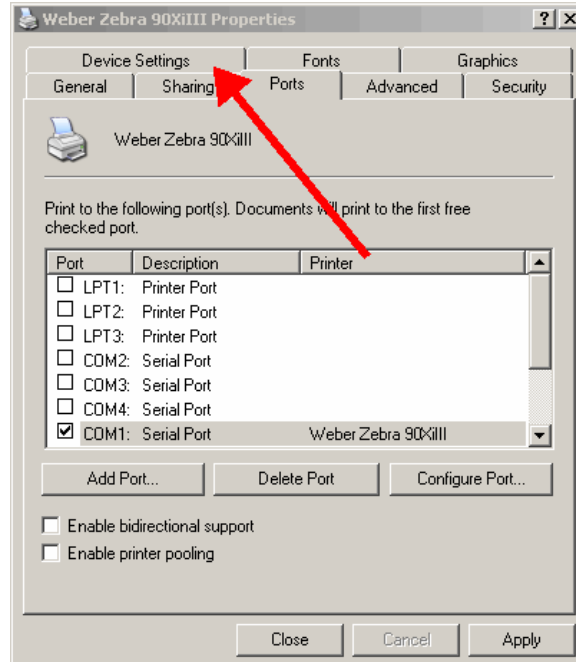


Figure 3

6. Click on the Properties button for the Setup Label Size option. (Figure 4)

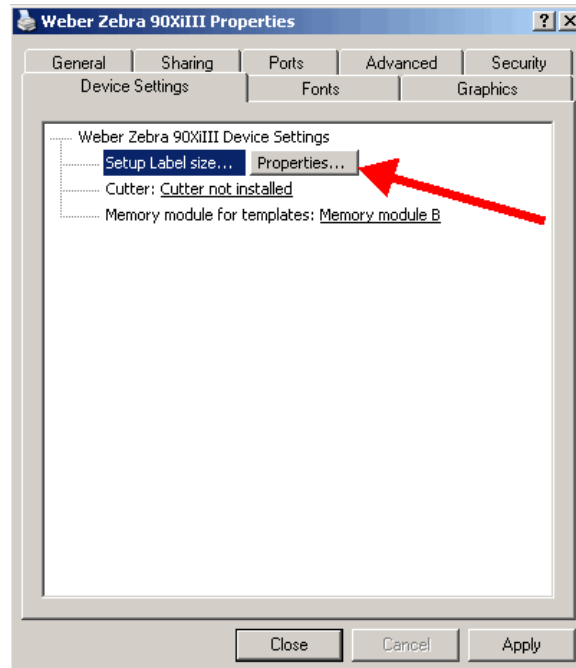


Figure 4

- Change the label settings from the existing values to 20 inches by 20 inches, (Figure 5a, b) and click OK.

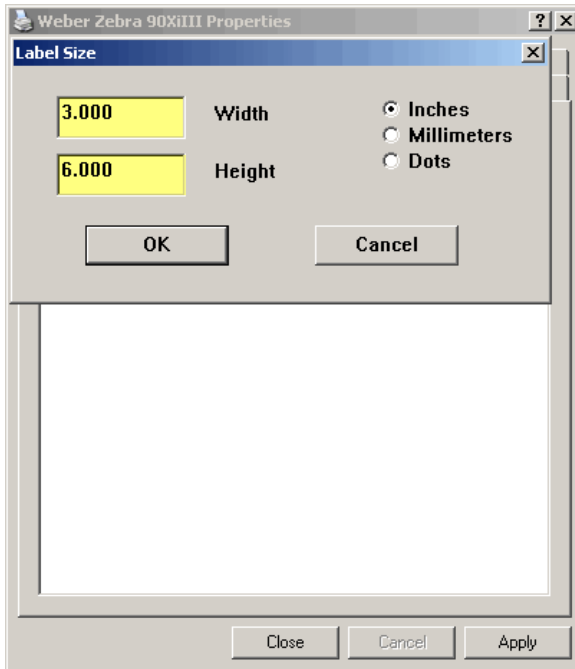


Figure 5a

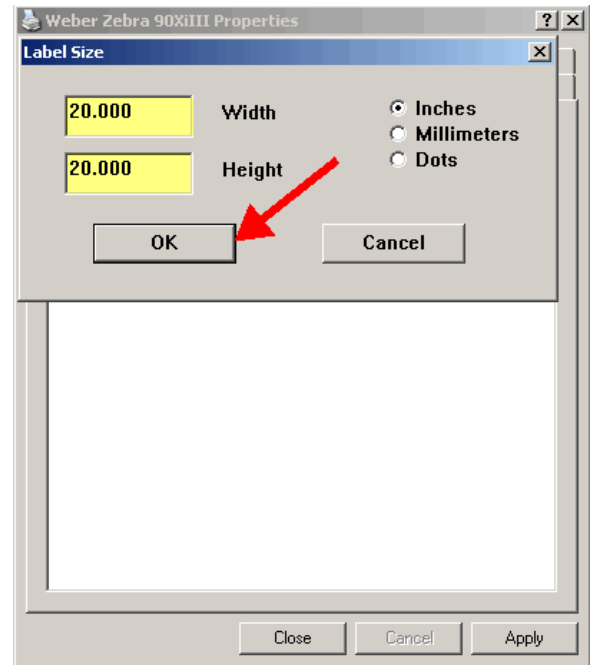


Figure 5b

- Click Close to finish setting up your printer. (Figure 6)

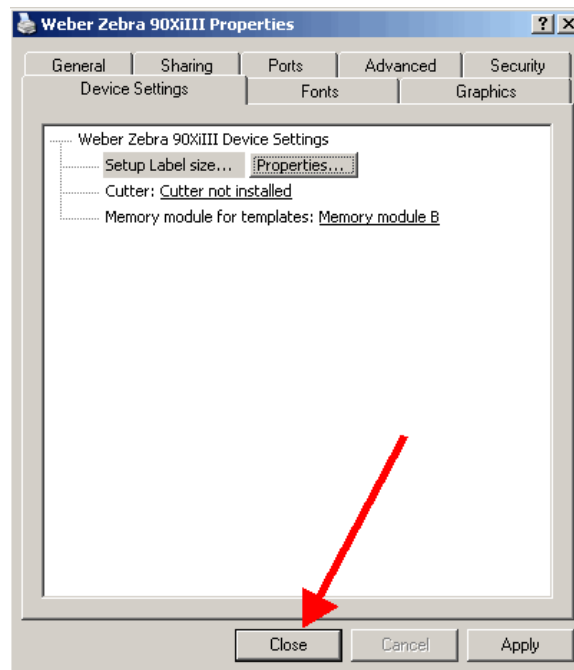


Figure 6